

Royal Romance

Skill Level: Advanced

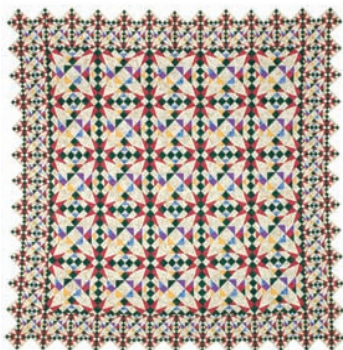
Designed by Mark Lipinski
Quilted by Deborah Hobbs,
 Ta Dah Custom Longarm
 Quilting

Quilt Size: 104½" x 104½"

Block Size: 12" x 12"

Border Block Size: 6¾" x 6¾"

To order a fabric kit for this quilt, see source at the end of the pattern.



Fabric Requirements:

(Yardage is based on 44" wide fabric)

NOTE FROM MARK: Here's the deal with suggested fabric: I made this quilt with jewel tone P&B fabrics from my own stash and am sorry to say it's no longer available. I have found 2 perfect substitutions in P&B fabrics for you to use straight or to mix and match. In any event, you'll have the chance to make a great quilt that will look as good as, or better, than the original!

7½ yard cream (Rambling Favorites # RFAV666NE or Ambrosia #305Y)

1 yard gold (Flora Fern #FFER801Y or Raindrops #307X)

2⅞ yard rose (Flora Fern #FFER801R or Raindrops #308R)

¾ yard purple (Flora Fern #FFER801C or Raindrops #308C or #307C)

⅞ yard blue (Flora Fern #FFER801B or Raindrops #308LB)

2¾ yard green (Flora Fern #FFER801G or Raindrops #308A)

9¼ yard backing

1¼ yard binding fabric (Rambling Favorites # RFAV666NE or Ambrosia #305Y)

110" x 110" quilt batting

Template plastic

Directions:

Note: A ¼" seam allowance is included in all measurements.

Cut 8: 2¾" x 44" strips cream
 From this

Cut 116: 2¾" x 2¾" squares cream

Cut 8: 1⅝" x 44" strips cream (set aside three strips uncut)
 From this

Cut 116: 1⅝" x 1⅝" squares

Cut 20: 2" x 44" strips cream
 From this

Cut 402: 2" x 2" squares cream

Cut 21: 4½" x 44" strips cream
 From this

Cut 125: 4½" x 4½" squares cream

Cut 100: 2½" x 4½" squares cream

Cut 16: 2½" x 44" strips cream (set aside twelve strips uncut)
 From this

Cut 56: 2½" x 2½" squares cream

Cut 18: 2⅞" x 44" strips cream
 From this

Cut 252: 2⅞" x 2⅞" squares cream

Cut 1: 4" x 44" strips gold
 From this

Cut 10: 4" x 4" squares gold

Cut 4: 2" x 44" strips gold
 From this

Cut 80: 2" x 2" squares gold

Cut 1: 5¼" x 44" strips gold
 From this

Cut 7: 5¼" x 5¼" squares gold

Cut 4: 2⅞" x 44" strips gold
 From this

Cut 50: 2⅞" x 2⅞" squares gold

Cut 13: 1⅝" x 44" strips rose
 From this

Cut 192: 1⅝" x 2¾" rectangles rose

Cut 3: 2" x 44" strips rose
 From this

Cut 60: 2" x 2" squares rose

Cut 24: 2½" x 44" strips rose
 From this

Cut 200: 2½" x 4½" rectangles rose

Cut 25: 2½" x 2½" squares

Cut 3: 2⅞" x 44" strips rose
 From this

Cut 38: 2⅞" x 2⅞" squares rose

Cut 1: 5¼" x 44" strips purple
 From this

Cut 7: 5¼" x 5¼" squares purple

Cut 1: 4" x 44" strips purple
 From this

Cut 10: 4" x 4" squares purple

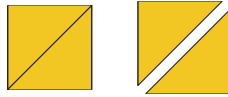
- Cut 2:** $1\frac{5}{8}$ " x 44" strips purple
From this
Cut 40: $1\frac{5}{8}$ " x $1\frac{5}{8}$ " squares purple
- Cut 1:** 2" x 44" strips purple
From this
Cut 20: 2" x 2" squares purple
- Cut 2:** $2\frac{1}{2}$ " x 44" strips purple
From this
Cut 25: $2\frac{1}{2}$ " x $2\frac{1}{2}$ " squares purple
- Cut 1:** $2\frac{7}{8}$ " x 44" strips purple
From this
Cut 13: $2\frac{7}{8}$ " x $2\frac{7}{8}$ " squares purple
- Cut 1:** $5\frac{1}{4}$ " x 44" strips blue
From this
Cut 7: $5\frac{1}{4}$ " x $5\frac{1}{4}$ " squares blue
- Cut 1:** 4" x 44" strips blue
From this
Cut 10: 4" x 4" squares blue
- Cut 3:** 2" x 44" strips blue
From this
Cut 60: 2" x 2" squares blue
- Cut 3:** $2\frac{7}{8}$ " x 44" strips blue
From this
Cut 38: $2\frac{7}{8}$ " x $2\frac{7}{8}$ " squares blue
- Cut 1:** $5\frac{1}{4}$ " x 44" strips green
From this
Cut 7: $5\frac{1}{4}$ " x $5\frac{1}{4}$ " squares green
- Cut 7:** $1\frac{5}{8}$ " x 44" strips green
(leave three strips uncut)
From this
Cut 80: $1\frac{5}{8}$ " x $1\frac{5}{8}$ " squares green
- Cut 7:** 2" x 44" strips green
From this
Cut 138: 2" x 2" squares green
- Cut 1:** 4" x 44" strips green
From this
Cut 10: 4" x 4" squares green
- Cut 16:** $2\frac{1}{2}$ " x 44" strips green
(leave twelve strips uncut)
From this
Cut 50: $2\frac{1}{2}$ " x $1\frac{1}{2}$ " squares green
- Cut 6:** $2\frac{7}{8}$ " x 44" strips green
From this
Cut 71: $2\frac{7}{8}$ " x $2\frac{7}{8}$ " squares green
- Cut 15:** $2\frac{1}{2}$ " x 44" binding fabric

Make Templates:

Trace all templates onto template plastic, marking cutting and seam lines. Cut out and label each template.

Directions:

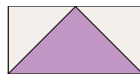
1. Diagonally cut all the 2" and $2\frac{7}{8}$ " squares into half-square triangles as shown. You may not use all the triangles.



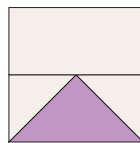
2. Diagonally cut twice all of the 4" and $5\frac{1}{4}$ " squares into quarter-square triangles as shown. You may not use all the triangles.



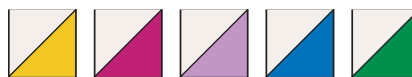
3. Using the $5\frac{1}{4}$ " quarter-square triangles and $2\frac{7}{8}$ " cream half-square triangles make twenty-five flying geese units each with purple, blue, green and gold.



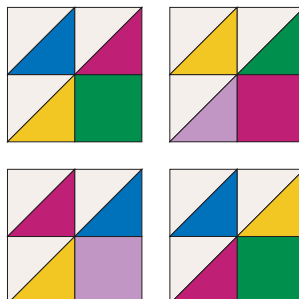
4. To the top of each of the flying geese units stitch a $2\frac{1}{2}$ " x $4\frac{1}{2}$ " cream rectangle as shown.



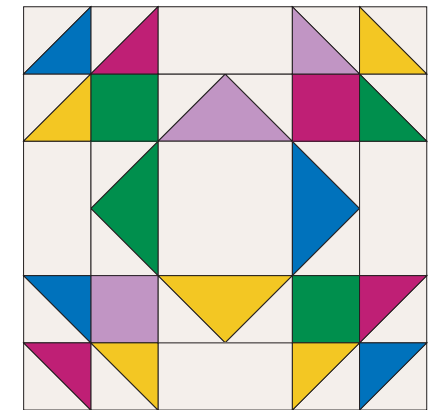
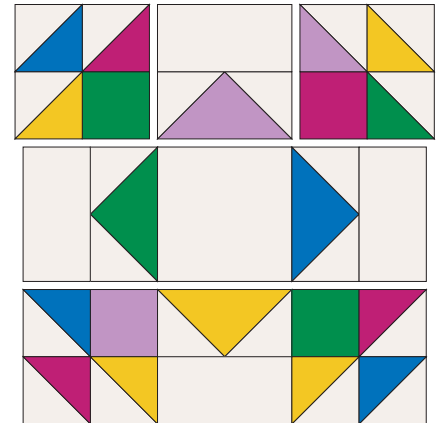
5. Using the $2\frac{7}{8}$ " half-square triangles make the following number of each half-square units: 100 gold/cream, 75 rose/cream, 25 purple/cream, 75 blue/cream and 25 green/cream.



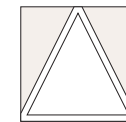
6. Referring to the diagram, make twenty-five of each corner unit using $2\frac{1}{2}$ " squares and the half-square triangle sets.



7. Lay out the sections as shown for a Summer Winds block with a $4\frac{1}{2}$ " cream square in the center. Stitch sections into rows then sew rows together. Repeat to make a total of 25 blocks.



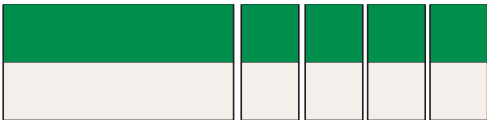
8. Trim each of the remaining one hundred $4\frac{1}{2}$ " cream squares using Template #1. Trim the two hundred $2\frac{1}{2}$ " x $4\frac{1}{2}$ " rose rectangles—half with Template #2 and half with Template 2R.



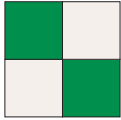
9. Matching seam allowances, sew the rose triangles to the cream triangle.



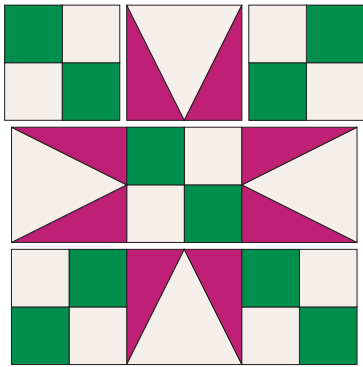
10. Sew each 2½" x 44" cream strip right sides together lengthwise with a green strip. From these twelve pieced strips cut 192 units, each 2½" wide.



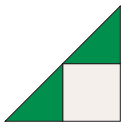
11. Make 96 four-patch sections as shown.



12. Lay out all the pieces as shown for the Garden Path block. Stitch pieces into rows then sew rows together. Repeat to make a total of 16 blocks.



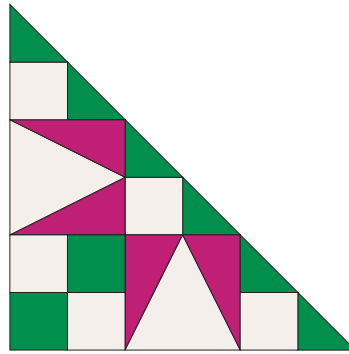
13. Make 56 units as shown using 2½" cream squares and 2⅞" green half-square triangles.



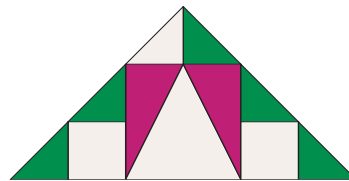
14. Make four pieced triangles with 2⅞" cream and green half-square triangles as shown.



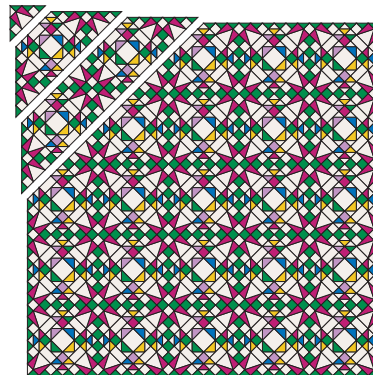
15. Lay out pieces for a Side Block. Stitch pieces into rows then sew rows together. Repeat to make a total of sixteen blocks.



16. Lay out pieces for a Corner Block. Stitch pieces together. Repeat to make a total of four blocks.



17. Lay all the blocks out for the quilt center as shown. Stitch blocks into diagonal rows then sew rows together.



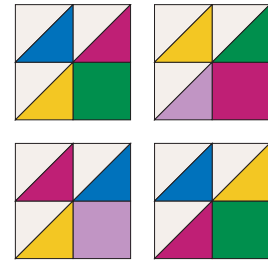
18. Make forty flying geese sections of each color with the 4" quarter-square colored square triangles and 2" cream half-square triangles.



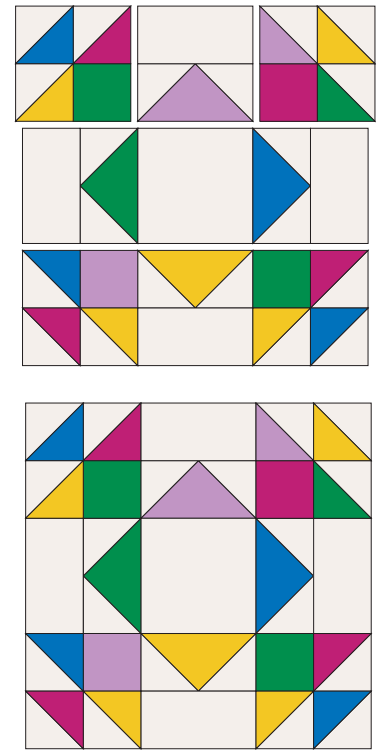
19. Using the 2" half-square triangles make the following number of each half-square units: 160 gold/cream, 120 rose/cream, 40 purple/cream, 120 blue/cream and 40 green/cream.



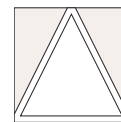
20. Make forty of each corner unit using 1⅝" squares and the half-square triangle sets.



21. Lay out the sections as shown for a 6¾" Summer Winds block with a 2¾" cream square in the center. Stitch sections into rows then sew rows together. Repeat to make a total of 40 blocks.



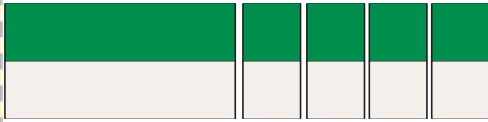
22. Trim seventy-six 2¾" cream squares using Template #3. Trim 152 1⅝" x 2¾" rose rectangles-half with Template #4 and half with Template 4R.



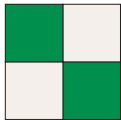
23. Sew the rose triangles to the cream triangle as shown.



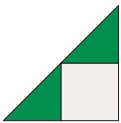
24. Sew each $1\frac{5}{8}$ " x 44" cream strip right sides together lengthwise with a green strip. From these strips cut 72 units, each $1\frac{5}{8}$ " wide.



25. Make 36 four-patch sections as shown.



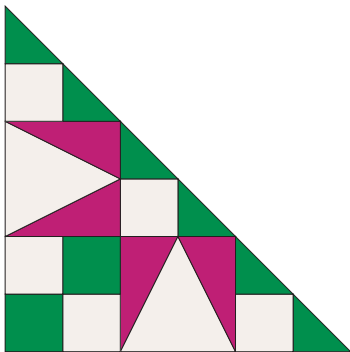
26. Make 116 units as shown using $1\frac{5}{8}$ " cream squares and 2" green half-square triangles.



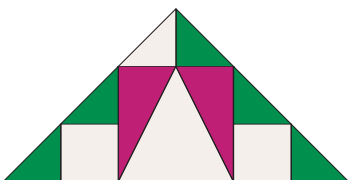
27. Make four pieced triangles with 2" cream and green half-square triangles as shown.



28. Lay out pieces for a Side Block. Stitch pieces into rows then sew rows together. Repeat to make a total of thirty-six blocks.

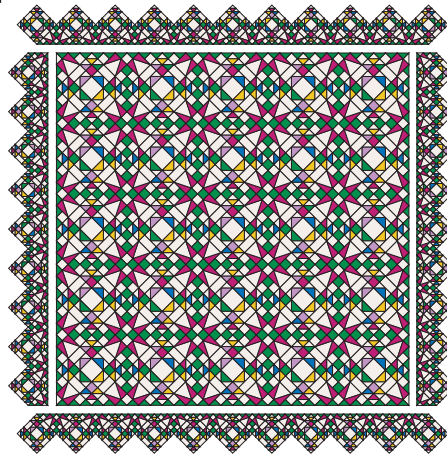


29. Lay out pieces for a Corner Block. Stitch pieces together. Repeat to make a total of four blocks.



30. Lay out pieces for two side borders and stitch together in diagonal rows then sew the rows together. Size border if needed by increasing seam allowances between rows slightly until the border fits perfectly. Stitch borders to right and left sides of quilt.

31. Lay out pieces for top and bottom borders and stitch together in diagonal rows then sew the rows together. Size borders as needed. Stitch borders to top and bottom of quilt.



37. Leaving an 8" tail of binding, sew binding to top of quilt through all layers matching all raw edges. Miter corners. Stop approximately 5" from where you started. Lay both loose ends of binding flat along quilt edge. Where these two loose ends meet, fold them back on themselves and press to form a crease. Using this crease as your stitching line, sew the two open ends of the binding together right sides together. Trim seam to $\frac{1}{4}$ " and press open. Finish sewing to quilt.

38. Turn binding to back of quilt and blind stitch in place.

39. Sign and date your work.

32. Cut backing into three equal lengths then stitch together along selvage edges into a large panel three widths across.

33. Layer backing, batting and quilttop. Baste layers together.

34. Quilt or tie as desired.

35. Sew 15 $2\frac{1}{2}$ " x 44" strips of binding fabric together end-to-end to make one long strip. Press strip in half lengthwise.

36. Carefully trim backing and batting even with quilt top.

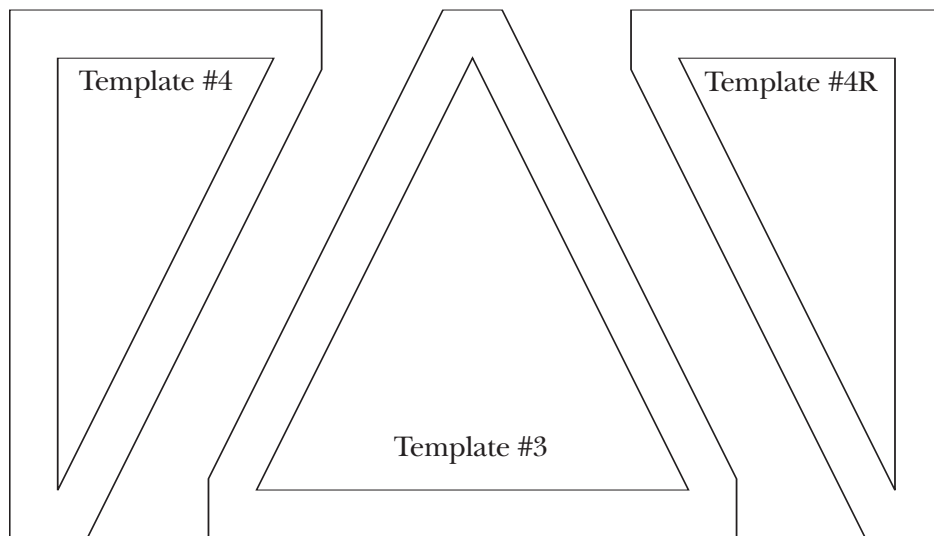
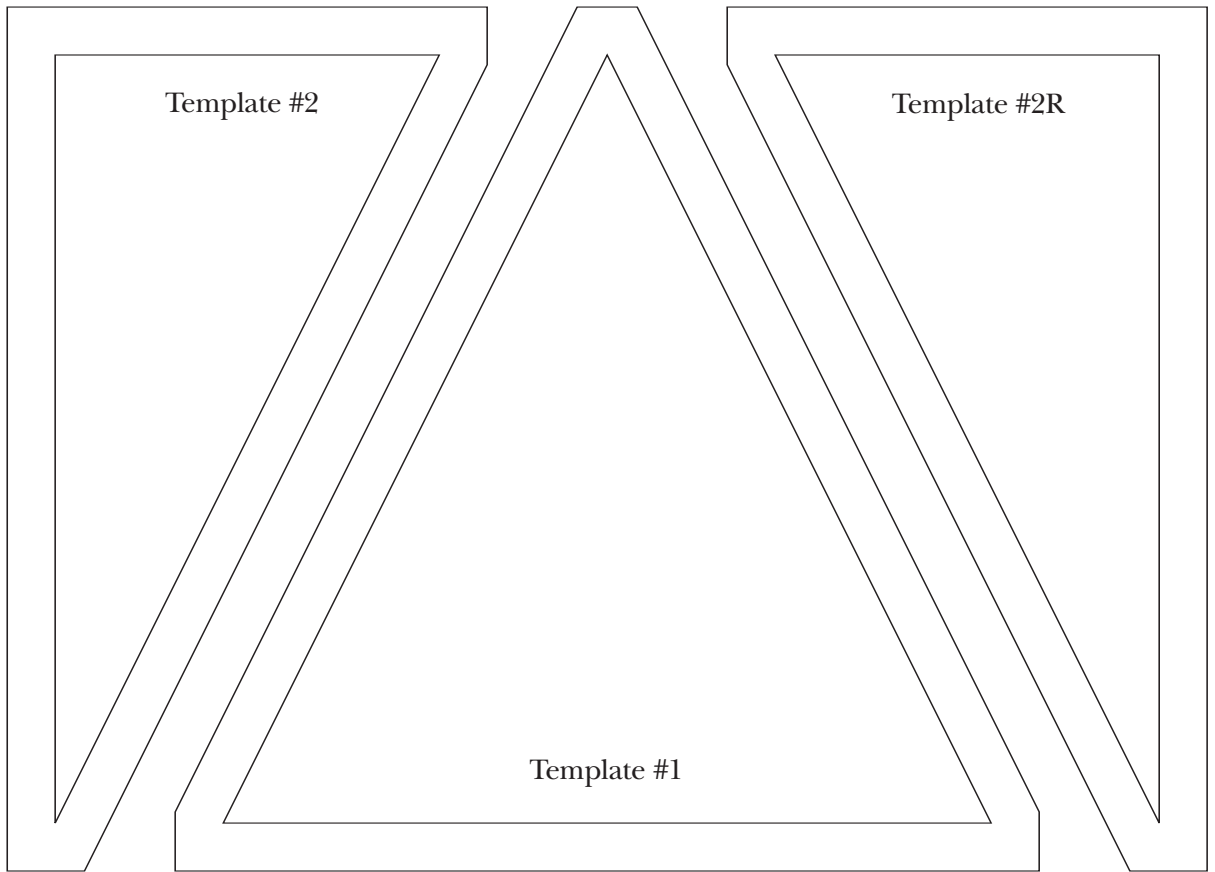
Order a Kit:

Fabric to make the quilt top only (includes binding) is available for \$128.95 (plus \$9.95 S&H within continental U.S., New York residents add 8% sales tax) from:

O'Susannah's Quilts and Gifts
111 W. Fourth St.
Watkins Glen, NY 14891

While supplies last. Phone (607) 535-6550 or visit www.osusannahsquilts.com.

Royal Romance



Note: The line above should measure one inch when printed